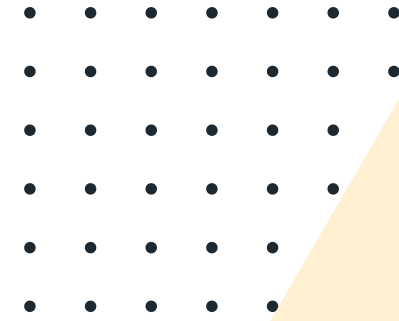




TRIUMPH
DEVELOPERS

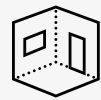


ANANTA LUXURY APARTMENT

Discover Your Dream Residence



Our Property



1 Unit Per Floor



Centrally Located



Pure Veg Community



Investment Opportunity



Rental Income

Luxury Apartment

Experience the pinnacle of luxury living at ANANTA, the exquisite property crafted to surpass all your expectations. Nestled in the Heart of the City, it is the epitome of opulence.

With a sprawling site area of 362 Sq Yds. , ANANTA boasts an impressive Apartment Layout and the planned Salable area spans across 11,565 Square feet, providing ample space for indulgence and comfort.

This prestigious property stands tall with 5 floors, offering a perfect blend of elegance and functionality. The building height of 15 meters further adds to its grandeur and allure.

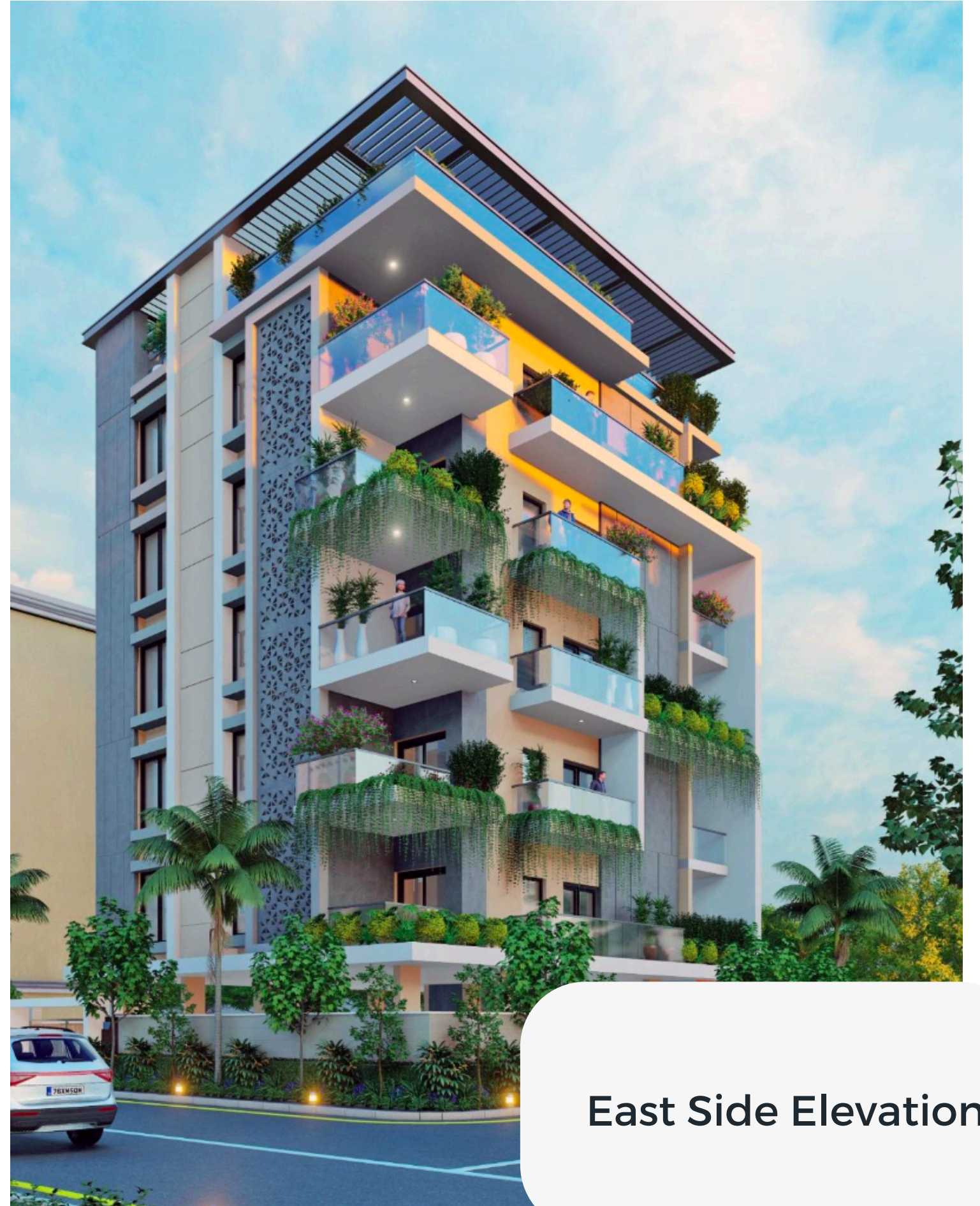
- • • • Embrace the luxury of spacious 3BHK flats within ANANTA, where impeccable design seamlessly, each residence is meticulously crafted to exude sophistication, offering a haven of tranquility and refinement.



Building Elevation



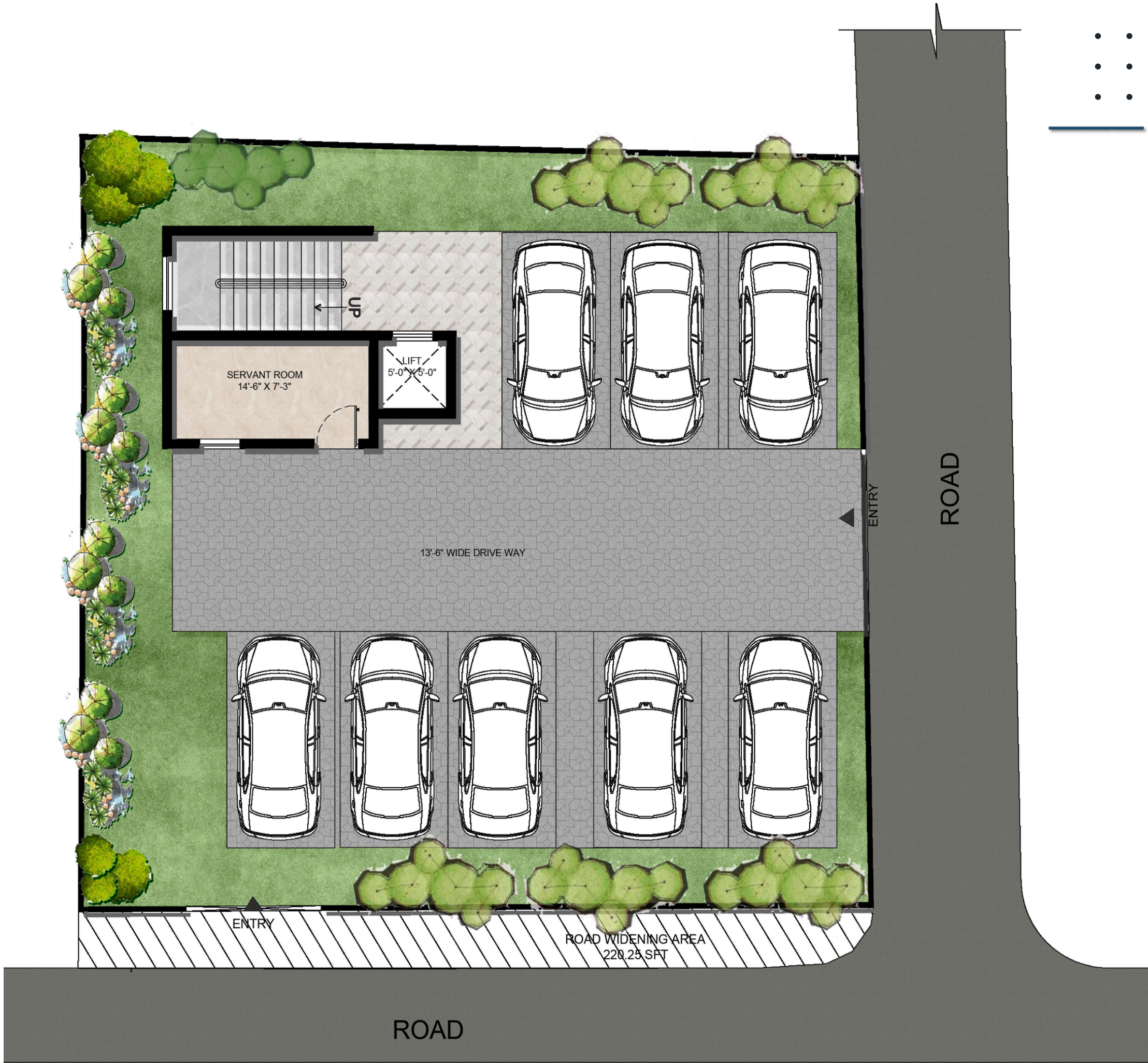
South Side Elevation



East Side Elevation



Parking Area



TYPICAL Floor Plan

Saleable Area
2,313 SFT.



TERRACE Plan



Specification

Structure

- **Structure-** R.C.C. structure designed to withstand wind and seismic loads.
- **Walls-** CC /AAC / Borothum Blocks, 4" Internal Walls and 8" External Walls.

Doors/Windows

- **French Doors-** UPVC sliding door with glass with mesh provision upto 8 ft height.
- **Windows-** UPVC sliding doors with glass with mesh provision.

Flooring

- **Living/Dining-** 800 x 800 mm size vitrified tiles of standard and reputed make.
- **Master Bedroom-** 800 x 800 mm size vitrified tiles of standard and reputed make.
- **Other Bedroom-** 800 x 800 mm size vitrified tiles of standard and reputed make.
- **Kitchen-** 600 x 600 mm size vitrified tiles of standard and reputed make.
- **Staircase-** Granite flooring / Precast concrete based steps.
- **Corridors-** Vitrified tiles of standard and reputed make / granite.
- **Bathroom-** Anti-skid vitrified tiles of standard and reputed make.



Specification

Painting

- **Internal-** Smooth putty finish with two coats of premium Acrylic emulsion paint of reputed make over a coat of primer.
- **External-** Textured finish and two coats of weather proof exterior emulsion paint of reputed make.
- **Parking Area-** OBD paint over one coat of luppum.

Kitchen

- **Utility Area-** Polished granite platform with superior stainless steel sink Dish washer and washing machine provision in the utility area RO provision.

Dadoing

- **Toilet-** Well designed concept with designer tiles for walls and floor, and dadoing up to door level.
- **Utility-** Glazed ceramic tiles up to 3' height near the wash area.



Specification

Bathroom

Utility

- Vanity type wash basin / counter top
- EWC with concealed flush valve of reputed make
- Single lever fixtures with wall mixer cum shower
- All C.P. fittings are reputed make equivalent
- All sanitary wares of reputed make

Electrical

- Miniature circuit breakers (MCB) for each distribution board of reputed make.
- Modular electrical switches of reputed make.
- Concealed conduit wiring with copper cables in all rooms for light, fan and plug points.
- Power points for indoor units of Air conditioner in living/dining and all rooms.

Telecom/ I-NET/ Cable TV

- FTH with WiFi internet DTH, telephone & audio intercom
- Provision to install Wi-Fi within home.



Specification

Lift

- High speed automatic passenger lifts with rescue device with V3F for energy efficiency of reputed make from Kone / Schiendler

Security, Surveillance And BMS

- CC cameras around the campus for surveillance

Water Treatment Plant

- Rain water harvesting pits as per the norms for recharging ground water.

Generator

- D.G backup for Common Areas and Club House

Fire Safety

- Fire hydrant and fire sprinkler system in the basements



Specification

FACILITY FOR DIFFERENTLY ABLED PEOPLE

- Access ramps at all entrances shall be provided for differently abled.

CLUB AND AMENITIES

- Party Area at the Terrace
- Aerobics / yoga / meditation room or Gym





TRIUMPH
DEVELOPERS



+91-7989833644/ 9866939993



info@triumphdevelopers.com



ANAND NAGAR COLONY Plot No. B/16,
Anand Nagar Colony, Khairtabad,
Hyderabad. Landmark: Opp. Renuka
Apartment and near Zilla Parishad
Office





Discover Your Dream Residence